

BILLY

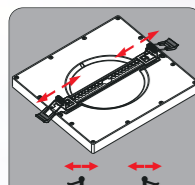
Pannello ad incasso LED quadrato, con finitura bianca e dotato di ghiera nickel lucido. Installabile a incasso o plafoniera.

Disponibile in due dimensioni e dotato di selettore CCT per un facile cambio di temperatura, calda, neutra o fredda,

BILLY

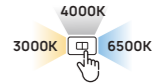
Square recessed LED panel, with white finish and equipped with a polished nickel ring trim ring.

Available in two sizes and equipped with a CCT selector for easy change of temperature, warm, neutral, or cold.



Compatibile per fori
da \varnothing 55mm
a \varnothing 175mm

Installabile
anche a Plafone

**BILLY**

Codice | Code

VRD 43_18

Colore | Color

Bianco | White

CCT: Regolabile | Changeable

3000K - 1500 lm
4000K - 1600 lm
6500K - 1530 lm

Ghiera nickel lucido
intercambiabile inclusa |
Interchangeable polished
nickel ring included

Potenza | Power

18 W

IP

20

Voltaggio | Voltage

AC 200 - 240 V

Frequenza | Frequency

50 Hz

Durata | Lifetime

30.000 h

Materiale | Material

Plastica + Ferro |
Plastic + Iron

Driver

Integrato | Integrated

Misure | Size

21,7 x 21,7 x h 1,5 cm

Angolo | Beam Angle

110°

PF

> 0,7

CRI

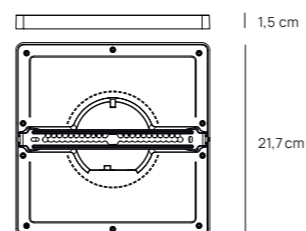
> 80

Peso | Weight

630 g

Master

20 pz



Codice | Code

VRD 43_24

Colore | Color

Bianco | White

CCT: Regolabile | Changeable

3000K - 2000 lm
4000K - 2100 lm
6500K - 2030 lm

Ghiera nickel lucido
intercambiabile inclusa |
Interchangeable polished
nickel ring included

Potenza | Power

24 W

IP

20

Voltaggio | Voltage

AC 200 - 240 V

Frequenza | Frequency

50 Hz

Durata | Lifetime

30.000 h

Materiale | Material

Plastica + Ferro |
Plastic + Iron

Driver

Integrato | Integrated

Misure | Size

29 x 29 x h 1,5 cm

Angolo | Beam Angle

110°

PF

> 0,7

CRI

> 80

Peso | Weight

900 g

Master

10 pz

