

## KRIS

Faretto incasso tondo led, orientabile, con finitura bianca

Cob led recessed spotlight - round, adjustable, white

Spot de embutir redondo led, ajustável, com acabamento branco

## VRD 25\_03 BI 3000K

- 3000 K

 225 lumen

## VRD 25\_03 BI 4000K

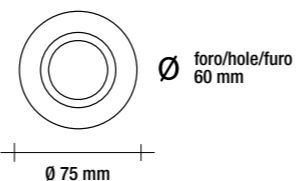
- 4000 K

 230 lumen

3W IP20



45 mm



finitura / finished / acabamento	bianco / white / branco / weiß / blanc / blanco
voltaggio / voltage / voltagem	AC 100-240V ~ 50/60 Hz
driver	incorporato / integrated / integrado
misure / measures / medida	Ø 75 mm, H 45 mm
foro / hole / furo	Ø 60 mm
angolo / beam angle / ângulo	38°
cri	> 80
durata / life / duração	> 20.000 ore / hours
materiale / material	PBT + alluminio / PBT + aluminium / PBT + aluminio
peso / weight	78,2 g

finitura / finished / acabamento	bianco / white / branco / weiß / blanc / blanco
voltaggio / voltage / voltagem	AC 100-240V ~ 50/60 Hz
driver	incorporato / integrated / integrado
misure / measures / medida	Ø 75 mm, H 45 mm
foro / hole / furo	Ø 60 mm
angolo / beam angle / ângulo	38°
cri	> 80
durata / life / duração	> 20.000 ore / hours
materiale / material	PBT + alluminio / PBT + aluminium / PBT + aluminio
peso / weight	78,2 g

## VRD 25\_07 BI 3000K

- 3000 K

 455 lumen

## VRD 25\_07 BI 4000K

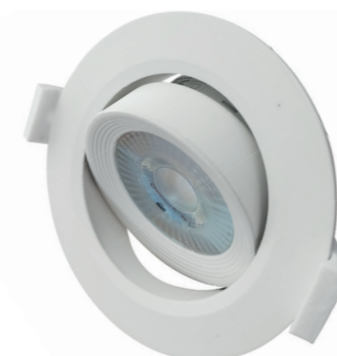
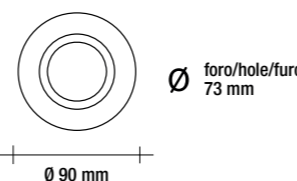
- 4000 K

 480 lumen

7W IP20



45 mm



finitura / finished / acabamento	bianco / white / branco / weiß / blanc / blanco
voltaggio / voltage / voltagem	AC 100-240V ~ 50/60 Hz
driver	incorporato / integrated / integrado
misure / measures / medida	Ø 90 mm, H 45 mm
foro / hole / furo	Ø 73 mm
angolo / beam angle / ângulo	38°
cri	> 80
durata / life / duração	> 20.000 ore / hours
materiale / material	PBT + alluminio / PBT + aluminium / PBT + aluminio
peso / weight	78,2 g

finitura / finished / acabamento	bianco / white / branco / weiß / blanc / blanco
voltaggio / voltage / voltagem	AC 100-240V ~ 50/60 Hz
driver	incorporato / integrated / integrado
misure / measures / medida	Ø 90 mm, H 45 mm
foro / hole / furo	Ø 73 mm
angolo / beam angle / ângulo	38°
cri	> 80
durata / life / duração	> 20.000 ore / hours
materiale / material	PBT + alluminio / PBT + aluminium / PBT + aluminio
peso / weight	78,2 g

## VRD 25\_10 BI 3000K

- 3000 K

 700 lumen

## VRD 25\_10 BI 4000K

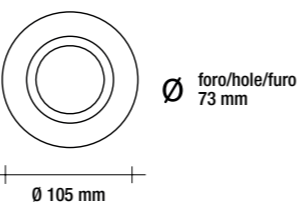
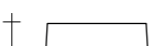
- 4000 K

 750 lumen

10W IP20



60 mm



finitura / finished / acabamento	bianco / white / branco / weiß / blanc / blanco
voltaggio / voltage / voltagem	AC 100-240V ~ 50/60 Hz
driver	incorporato / integrated / integrado
misure / measures / medida	Ø 105 mm, H 60 mm
foro / hole / furo	Ø 73 mm
angolo / beam angle / ângulo	38°
cri	> 80
durata / life / duração	> 20.000 ore / hours
materiale / material	PBT + alluminio / PBT + aluminium / PBT + aluminio
peso / weight	165,4 g

finitura / finished / acabamento	bianco / white / branco / weiß / blanc / blanco
voltaggio / voltage / voltagem	AC 100-240V ~ 50/60 Hz
driver	incorporato / integrated / integrado
misure / measures / medida	Ø 105 mm, H 60 mm
foro / hole / furo	Ø 73 mm
angolo / beam angle / ângulo	38°
cri	> 80
durata / life / duração	> 20.000 ore / hours
materiale / material	PBT + alluminio / PBT + aluminium / PBT + aluminio
peso / weight	165,4 g

## KRIS

Faretto incasso tondo led, orientabile, con finitura bianca

Cob led recessed spotlight - round, adjustable, white

Spot de embutir redondo led, ajustável, com acabamento branco

## VRD 25\_12 BI 3000K

- 3000 K

 1000 lumen

## VRD 25\_12 BI 4000K

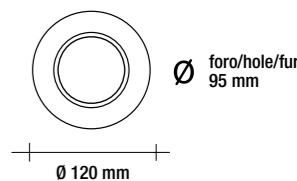
- 4000 K

 1050 lumen

12W IP20



50 mm



finitura / finished / acabamento	bianco / white / branco / weiß / blanc / blanco
voltaggio / voltage / voltagem	AC 100-240V ~ 50/60 Hz
driver	incorporato / integrated / integrato
misure / measures / medida	Ø 120 mm, H 50 mm
foro / hole / furo	Ø 95 mm
angolo / beam angle / ângulo	45°
cri	> 80
durata / life / duração	> 20.000 ore / hours
materiale / material	PBT + alluminio / PBT + aluminium / PBT + aluminio
peso / weight	170 g

finitura / finished / acabamento	bianco / white / branco / weiß / blanc / blanco
voltaggio / voltage / voltagem	AC 100-240V ~ 50/60 Hz
driver	incorporato / integrated / integrado
misure / measures / medida	Ø 120 mm, H 50 mm
foro / hole / furo	Ø 95 mm
angolo / beam angle / ângulo	45°
cri	> 80
durata / life / duração	> 20.000 ore / hours
materiale / material	PBT + alluminio / PBT + aluminium / PBT + aluminio
peso / weight	170 g

## VRD 25\_15 BI 3000K

- 3000 K

 1200 lumen

## VRD 25\_15 BI 4000K

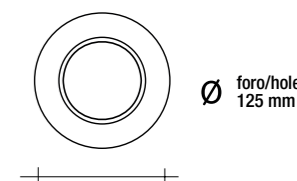
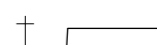
- 4000 K

 1250 lumen

15W IP20



55 mm



finitura / finished / acabamento	bianco / white / branco / weiß / blanc / blanco
voltaggio / voltage / voltagem	AC 100-240V ~ 50/60 Hz
driver	incorporato / integrated / integrato
misure / measures / medida	Ø 145 mm, H 55 mm
foro / hole / furo	Ø 125 mm
angolo / beam angle / ângulo	45°
cri	> 80
durata / life / duração	> 20.000 ore / hours
materiale / material	PBT + alluminio / PBT + aluminium / PBT + aluminio
peso / weight	240 g

finitura / finished / acabamento	bianco / white / branco / weiß / blanc / blanco
voltaggio / voltage / voltagem	AC 100-240V ~ 50/60 Hz
driver	incorporato / integrated / integrado
misure / measures / medida	Ø 145 mm, H 55 mm
foro / hole / furo	Ø 125 mm
angolo / beam angle / ângulo	45°
cri	> 80
durata / life / duração	> 20.000 ore / hours
materiale / material	PBT + alluminio / PBT + aluminium / PBT + aluminio
peso / weight	240 g

## VRD 25\_18 BI 3000K

- 3000 K

 1400 lumen

## VRD 25\_18 BI 4000K

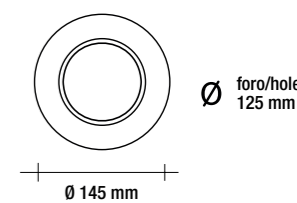
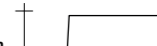
- 4000 K

 1450 lumen

18W IP20



55 mm



finitura / finished / acabamento	bianco / white / branco / weiß / blanc / blanco
voltaggio / voltage / voltagem	AC 100-240V ~ 50/60 Hz
driver	incorporato / integrated / integrato
misure / measures / medida	Ø 145 mm, H 55 mm
foro / hole / furo	Ø 125 mm
angolo / beam angle / ângulo	45°
cri	> 80
durata / life / duração	> 20.000 ore / hours
materiale / material	PBT + alluminio / PBT + aluminium / PBT + aluminio
peso / weight	246 g

finitura / finished / acabamento	bianco / white / branco / weiß / blanc / blanco
voltaggio / voltage / voltagem	AC 100-240V ~ 50/60 Hz
driver	incorporato / integrated / integrado
misure / measures / medida	Ø 145 mm, H 55 mm
foro / hole / furo	Ø 125 mm
angolo / beam angle / ângulo	45°
cri	> 80
durata / life / duração	> 20.000 ore / hours
materiale / material	PBT + alluminio / PBT + aluminium / PBT + aluminio
peso / weight	246 g