

ZED

Apparecchio da incasso a terra per illuminazione di esterni costituito da:

- Struttura in alluminio pressofuso verniciato
- Diffusore in vetro trasparente
- Guarnizioni in silicone
- Viti di chiusura in acciaio inox
- Pozzetto in polipropilene per installazione a terra
- Verniciatura in polveri poliestere ad elevata resistenza ai raggi ultravioletti e alla corrosione

Outdoor recessed ground luminaire constructed of:

- Painted die-cast aluminium body
- Transparent glass diffuser
- Silicon gaskets
- Stainless steel screws
- Polypropylene holder for ground fixing
- Painting using high resistance to UV and corrosion polyester powders



Colori - Colours

X=9  Antracite
Anthracite

X=4  Silver

Diffusore - Diffuser

Codice-Code 00 5054

Le lampadine vengono fornite solo su richiesta

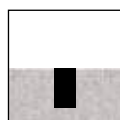
Bulbs supplied only on request

Gli apparecchi vengono forniti completi di cassaforma

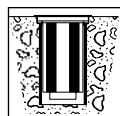
The holder is enclosed to the luminaire

Classe energetica : vedi pag. 356

Energy class : see page 356

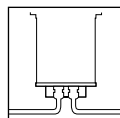


Incasso a terra
Recessed ground version



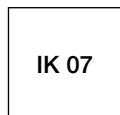
La cassaforma deve essere installata a filo terreno, prevedendo ghiaia di drenaggio per almeno 30 cm.

The holder must be recessed into the ground providing a drainage-gravel for at least 30 cm

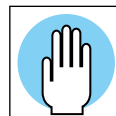


Doppia entrata cavi di alimentazione con pressacavi PG13,5 (ø 6±12 mm). Usare cavi flessibili per non compromettere la tenuta stagna IP67.

Double entrance of the supply cables with gland type PG 13,5 (ø 6±12 mm). Use only flexible cables to grant protection against water exposure (IP 67)





CS 1084 per installazione a terra
Pozzetto in polipropilene
CS 1084 Polypropylene holder for ground installation only Ø 180 mm - h 180 mm



Simbolo che indica la temperatura superficiale sulla calotta T<70°C (dati rilevati a ta per esterni di 15°C)
Cover's surface temperature T<70°C (ambient temperature data of 15°C)

Temperatura calotta (ta 15°C)
Cover's temperature (ta 15°C)

Zona di installazione:
Intended usage:

A60	75W		65°C	1
TC-T	18W		45°C	1

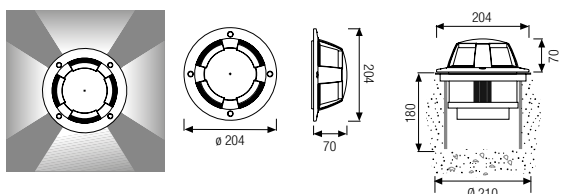
NOTA: zona di installazione definita dalla norma EN 60598-2-13 Allegato A - Vedi pag. 355

Note: intended usage is defined by the standard EN 60598-2-13 Annex A - See pag. 355



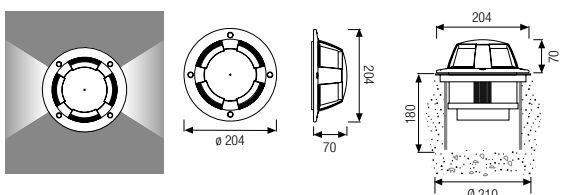
5056 4 aperture / 4 openings

5056.00X		A60	75W	E27
5056.84X		TC-T	18W	GX24 d-2



5054 2 aperture / 2 openings

5054.00X		A60	75W	E27
5054.84X		TC-T	18W	GX24 d-2



5058

5058.00X		A60	75W	E27
5058.84X		TC-T	18W	GX24 d-2

