

# SHOW

Proiettore per interni ed esterni a parete, a soffitto o a terra costituito da:

- Struttura in alluminio pressofuso verniciato
- Diffusore in vetro temperato
- Guarnizioni in silicone
- Viti di chiusura in acciaio Inox
- Picchetto in plastica
- Verniciatura in polveri poliestere ad elevata resistenza ai raggi ultravioletti e alla corrosione

Indoor and outdoor wall, ceiling or ground spotlight constructed of:

- Die-cast painted aluminium body
- Tempered glass diffuser
- Silicon gaskets
- Stainless steel screws
- Plastic spike
- Painting using high resistance to UV and corrosion polyester powders



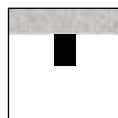
Colori - Colours

X=31  Antracite metallico  
Anthracite metallic

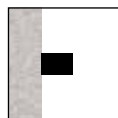
Diffusore - Diffuser  
Codice-Code 00 4050

**Le lampadine vengono fornite solo su richiesta ad eccezione della versione GU10 LED**  
Bulbs supplied only on request except for GU10 LED version

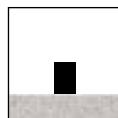
Classe energetica : vedi pag. 356  
Energy class : see page 356



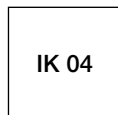
Cod. 4050  
Installazione a soffitto  
Ceiling mounting



Cod. 4050  
Installazione a parete  
Wall mounting



Cod. 4060  
Installazione a terra  
Floor mounting



IK 04

Cod. 4060  
Apparecchio provvisto di 3 m di cavo H05RN-F con spina 2P+T IP44

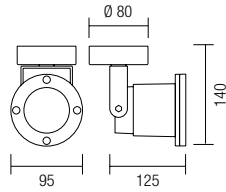
Cod. 4060  
Luminaire provided with 3 m of flexible cable H05RN-F and plug 2P+T IP44

**Installazione a parete**  
Wall mounting

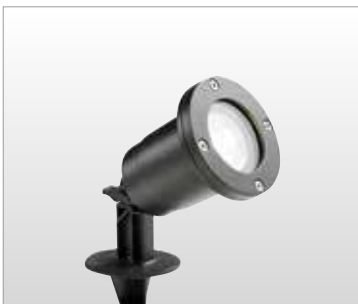


**4050** ○ anello / ring

<b>4050.15X</b>		Q PAR16	50W	GU10	
● <b>4050.05X</b>		LED GU10	6W	450 lm	4000 K
● <b>4050.06X</b>		LED GU10	6W	440 lm	3000 K

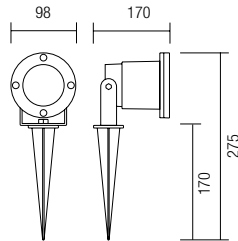


**Installazione a terra con picchetto**  
Ground fixing with spike



**4060** ○ anello / ring

<b>4060.15X</b>		Q PAR16	50W	GU10	
● <b>4060.05X</b>		LED GU10	6W	450 lm	4000 K
● <b>4060.06X</b>		LED GU10	6W	440 lm	3000 K



- Lampadina LED inclusa - 50x56 mm  
LED bulb included - 50x56 mm

