





PIXEL

PIXEL

Apparecchio da incasso a terra per esterni ed interni costituito da:

- Struttura in alluminio
- Copertura in acciaio inox AISI 316
- Diffusore in policarbonato
- Lente 60°
- Guarnizione in silicone
- Cassaforma in PVC

Outdoor and indoor recessed ground luminaire constructed of:

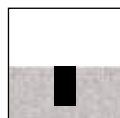
- Aluminium structure
- Stainless steel AISI 316 cover
- Polycarbonate diffuser
- Lens 60°
- Silicon gasket
- PVC holder



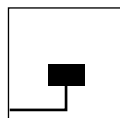
Diffusore - Diffuser
Codice-Code 00 3801
00 3802

Gli apparecchi vengono forniti completi di cassaforma
The holder is enclosed to the luminaire

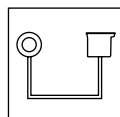
Classe energetica : vedi pag. 356
Energy class : see page 356



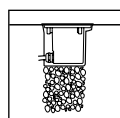
Incasso a terra
Recessed ground version



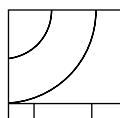
Entrata singola cavi di alimentazione
Single power supply cables input



LED
L'apparecchio necessita di alimentatore remoto elettronico (fornito solo su richiesta)
The luminaire needs a remote power supply (supplied only on request)



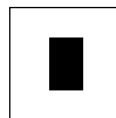
La cassaforma deve essere installata a filo terreno, prevedendo ghiaia di drenaggio per almeno 30 cm.
Ground luminaire. The box must be recessed into the ground providing a drainage-gravel for at least 30 cm



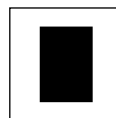
Carico massimo:
Kg 2000 a velocità max
30 Km/h
Maximum load:
Kg 2000 at 30/Km/h max speed



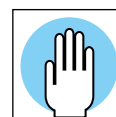
IK 10



CS 01
Cassaforma in tecnopolimero per vano ad incasso h 100 mm - Ø 24 mm
Technopolymer holder h 100 mm - Ø 24 mm



CS 02
Cassaforma in tecnopolimero per vano ad incasso h 100 mm - Ø 50 mm
Technopolymer holder h 100 mm - Ø 50 mm



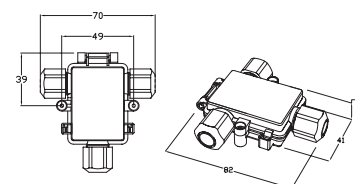
Simbolo che indica la temperatura superficiale sul vetro T<70°C (dati rilevati a ta di 15°C)
Glass surface temperature T<70°C (ambient temperature data of 15°C)

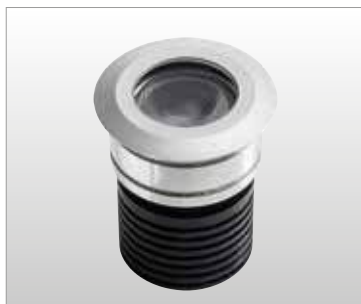
| Temperatura calotta (ta 15°C) Cover's temperature (ta 15°C) | Zona di installazione: Intended usage: |
|--|---|
| LED <40°C | 5 |

NOTA: zona di installazione definita dalla norma EN 60598-2-13 Allegato A - Vedi pag. 355
Note: intended usage is defined by the standard EN 60598-2-13 Annex A - See pag. 355

OPTIONAL

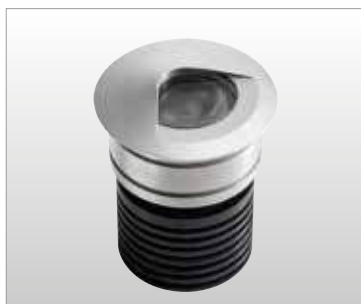
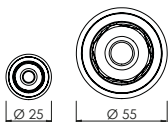
Codice-Code CN 24
sistema di congiunzione IP67
con driver 12/24V a tensione costante
IP67 connecting device
with driver 12/24V constant voltage





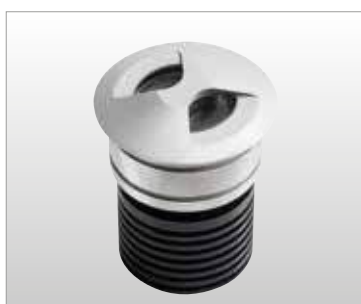
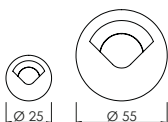
3801 Ø 25 - 3802 Ø 55

| | | | | | |
|----------|-----|----|--------|--------|-----|
| 3801.660 | LED | 1W | 110 lm | 4000 K | 60° |
| 3801.670 | LED | 1W | 98 lm | 3000 K | 60° |
| 3802.660 | LED | 4W | 370lm | 4000 K | 60° |
| 3802.670 | LED | 4W | 320lm | 3000 K | 60° |



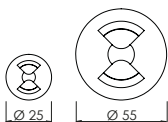
3805 Ø 25 - 3825 Ø 55

| | | | | | |
|----------|-----|----|--------|--------|-----|
| 3805.660 | LED | 1W | 110 lm | 4000 K | 60° |
| 3805.670 | LED | 1W | 98 lm | 3000 K | 60° |
| 3825.660 | LED | 4W | 370lm | 4000 K | 60° |
| 3825.670 | LED | 4W | 320lm | 3000 K | 60° |



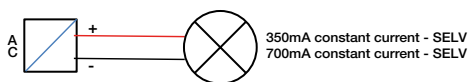
3804 Ø 25 - 3824 Ø 55

| | | | | | |
|----------|-----|----|--------|--------|-----|
| 3804.660 | LED | 1W | 110 lm | 4000 K | 60° |
| 3804.670 | LED | 1W | 98 lm | 3000 K | 60° |
| 3824.660 | LED | 4W | 370lm | 4000 K | 60° |
| 3824.670 | LED | 4W | 320lm | 3000 K | 60° |



SCHEMI DI COLLEGAMENTO / SCHEMATICS

SINGOLO / STAND ALONE



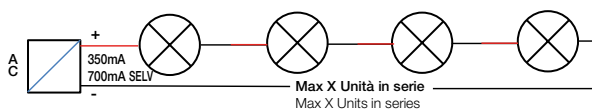
PIXEL MINI / PIXEL MINI

350 mA per 1 apparecchio / For 1 luminaire **Cod. D 1**

PIXEL BIG / PIXEL BIG

350 mA per 1 apparecchio / For 1 luminaire **Cod. D 1**
700 mA per 1 apparecchio / For 1 luminaire **Cod. D 2**

COLLEGAMENTO IN SERIE/ SERIE CONNECTION : max 48Vdc SELV



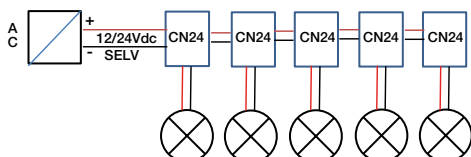
PIXEL MINI / PIXEL MINI

350 mA 1...3 apparecchi / 1...3 luminaires **Cod. D 1**
350 mA 4...7 apparecchi / 4...7 luminaires **Cod. DP 44**
350 mA 5...13 apparecchi / 5...13 luminaires **Cod. DP 42**

PIXEL BIG / PIXEL BIG

350 mA 2...5 apparecchi / 2...5 luminaires **Cod. D 18**
350 mA 3...8 apparecchi / 3...8 luminaires **Cod. DP 42**
700 mA 3...8 apparecchi / 3...8 luminaires **Cod. D 20**

COLLEGAMENTO IN PARALLELO / PARALLEL CONNECTION - SELV



PIXEL MINI / PIXEL MINI

350 mA 1...15 apparecchi / 1...15 luminaires **Cod. D 32 + CN 24*** (per ogni faretto / each luminaire)
350 mA 1...23 apparecchi / 1...23 luminaires **Cod. D 33 + CN 24*** (per ogni faretto / each luminaire)

PIXEL BIG / PIXEL BIG

350 mA 1...6 apparecchi / 1...6 luminaires **Cod. D 14 + CN 24*** (per ogni faretto / each luminaire)
350 mA 1...16 apparecchi / 1...16 luminaires **Cod. D 16 + CN 24*** (per ogni faretto / each luminaire)
700 mA 1...3 apparecchi / 1...3 luminaires **Cod. D 14 + CN 24*** (per ogni faretto / each luminaire)
700 mA 1...8 apparecchi / 1...8 luminaires **Cod. D 16 + CN 24*** (per ogni faretto / each luminaire)

Il numero di unità dipende dalla potenza del driver impiegato e dalla lunghezza dei cavi / Unit nr. depends from power of driver and cable length

(*) CN 24 va regolato secondo il manuale di istruzioni.
CN 24 must be set. Refer to CN24 instruction manual for setting.