

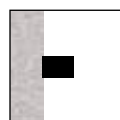
COMBO SURFACE

Apparecchio lineare a parete con LED a luce diffusa per esterni ed interni costituito da:

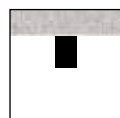
- Struttura in alluminio estruso verniciato
- Tappi di chiusura in policarbonato
- LED mid power
- **Diffusore in resina opale**
- Connettore cavi H₂O STOP
- Guarnizione in silicone
- Viti di chiusura in acciaio inox
- Verniciatura in polveri poliestere ad elevata resistenza ai raggi ultravioletti e alla corrosione

Outdoor and indoor wall diffuse light LED luminaire constructed of:

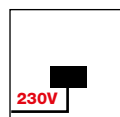
- Painted extruded and die-cast aluminium structure
- Polycarbonate closing caps
- LED mid power
- **Opal resin diffuser**
- H₂O STOP cables connector
- Silicon gasket
- Stainless steel screws
- Painting using high resistance to UV and corrosion polyester powders



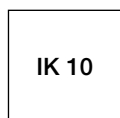
COD. 5120-5121-5130-5131
Installazione a parete
Wall mounting



COD. 5140-5141
Installazione a soffitto
Ceiling mounting



L'apparecchio è fornito completo di alimentatore elettronico 220/240V 50/60Hz posizionato all'interno dell'apparecchio.
The luminaire is supplied with a 220/240V 50/60Hz built-in power supply



IK 10



Colori - Colours

X=2 Bianco
White

X=4 Silver

Classe energetica : vedi pag. 356
Energy class : see page 356

DALI
Su richiesta
On request

LA SORGENTE LED È ANNEGATA IN RESINA POLIURETANICA CON UN PROCEDIMENTO ALTAMENTE TECNOLOGICO.

CARATTERISTICHE DELLA RESINATURA:

- resistente alle alte temperature, umidità, acqua, acqua marina, acqua bollente
- autoestingente
- resistente agli shock termici (da - 40°C a + 80°C)
- non rilascia fumi tossici
- stabilità del colore e della lucentezza anche in condizioni di utilizzo esasperato

THE LED SOURCE IS EMBEDDED IN POLYURETHANE RESIN WITH A HIGHLY TECHNOLOGICAL PROCESS.

RESIN CHARACTERISTICS:

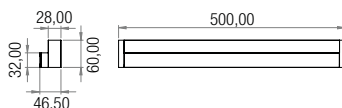
- resistant to high temperatures, humidity, water, sea water, boiling water
- self-extinguishing
- resistant to thermal shocks (from - 40°C to + 80°C)
- does not release toxic fumes
- stable color and luster even in extreme use

COMBO A PARETE - monoemissione / COMBO WALL VERSION - mono-light version

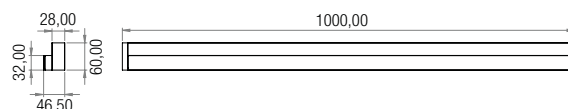


5120 L 500 mm
5121 L 1000 mm

5120.66X	LED	11,5W	1850 lm	4000 K	
5120.67X	LED	11,5W	1750 lm	3000 K	
5120.66XD	LED	11,5W	1850 lm	4000 K	DALI
5120.67XD	LED	11,5W	1750 lm	3000 K	DALI



5121.66X	LED	23W	3700 lm	4000 K	
5121.67X	LED	23W	3500 lm	3000 K	
5121.66XD	LED	23W	3700 lm	4000 K	DALI
5121.67XD	LED	23W	3500 lm	3000 K	DALI

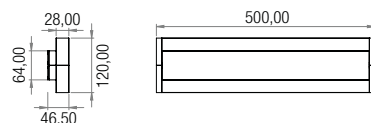


COMBO A PARETE - biemissione / COMBO WALL VERSION - double light version

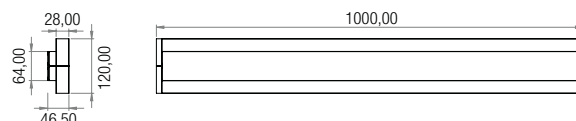


5130 L 500 mm
5131 L 1000 mm

5130.66X	LED	2x11,5W	2x1850 lm	4000 K	
5130.67X	LED	2x11,5W	2x1750 lm	3000 K	
5130.66XD	LED	2x11,5W	2x1850 lm	4000 K	DALI
5130.67XD	LED	2x11,5W	2x1750 lm	3000 K	DALI



5131.66X	LED	2x23W	2x3700 lm	4000 K	
5131.67X	LED	2x23W	2x3500 lm	3000 K	
5131.66XD	LED	2x23W	2x3700 lm	4000 K	DALI
5131.67XD	LED	2x23W	2x3500 lm	3000 K	DALI

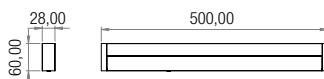


COMBO A SOFFITTO / COMBO CEILING VERSION



5140 L 500 mm
5141 L 1000 mm

5140.66X	LED	11,5W	1850 lm	4000 K	
5140.67X	LED	11,5W	1750 lm	3000 K	
5140.66XD	LED	11,5W	1850 lm	4000 K	DALI
5140.67XD	LED	11,5W	1750 lm	3000 K	DALI



5141.66X	LED	23W	3700 lm	4000 K	
5141.67X	LED	23W	3500 lm	3000 K	
5141.66XD	LED	23W	3700 lm	4000 K	DALI
5141.67XD	LED	23W	3500 lm	3000 K	DALI

