

# ZED

Apparecchio da incasso a terra per illuminazione di esterni costituito da:

- Struttura in alluminio pressofuso verniciato
- Diffusore in vetro trasparente
- Guarnizioni in silicone
- Viti di chiusura in acciaio inox
- Pozzetto in polipropilene per installazione a terra
- Verniciatura in polveri poliestere ad elevata resistenza ai raggi ultravioletti e alla corrosione

Outdoor recessed ground luminaire constructed of:

- Painted die-cast aluminium body
- Transparent glass diffuser
- Silicon gaskets
- Stainless steel screws
- Polypropylene holder for ground fixing
- Painting using high resistance to UV and corrosion polyester powders



Colori - Colours

X=9  Antracite / Anthracite

X=4  Silver

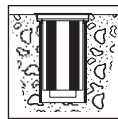
Diffusore - Diffuser

Codice-Code 00 5054

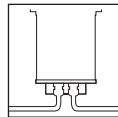
Gli apparecchi vengono forniti completi di cassafornice  
The holder is enclosed with the luminaire



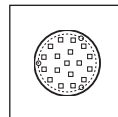
**Incasso a terra**  
Recessed ground version



**La cassafornice deve essere installata a filo terreno, prevedendo ghiaia di drenaggio per almeno 30 cm.**  
The holder must be recessed into the ground providing a drainage-gravel for at least 30 cm



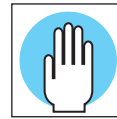
**Doppia entrata cavi di alimentazione con pressacavi PG13,5 (ø 6±12 mm). Usare cavi flessibili per non compromettere la tenuta stagna IP67.**  
Double entrance of the supply cables with gland type PG 13,5 (ø 6±12 mm). Use only flexible cables to grant protection against water exposure (IP67)




**LED Gx53**  
**Non necessita di alcun alimentatore.**  
It does not need the power supply.



**cod. CS 52**  
**Pozzetto in polipropilene**  
Ø 180 mm - h 150 mm  
Polypropylene holder  
Ø 180 mm - h 150 mm



**Simbolo che indica la temperatura delle superfici toccabili**  
Symbol indicating the temperature of the touchable surfaces

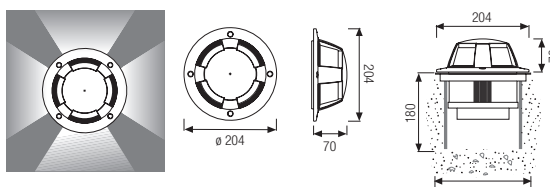
Temperatura superficie (ta 15°C) Surface temperature (ta 15°C)		Zona di installazione: Intended usage:
LED	 <40°C	1

**NOTA: zona di installazione definita dalla norma EN 60598-2-13 Allegato A - Vedi pag. 348**  
Note: intended usage is defined by the standard EN 60598-2-13 Annex A - See pag. 348



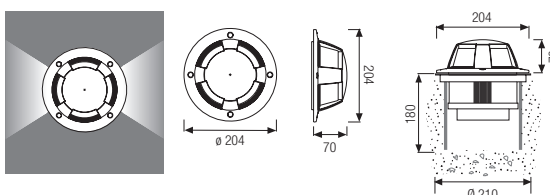
**5056** 4 aperture / 4 openings

• <b>5056.68X</b>		LED	6,5W	Gx53	650 lm	4000 K
• <b>5056.69X</b>		LED	6,5W	Gx53	650 lm	3000 K



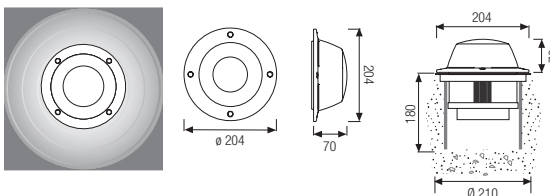
**5054** 2 aperture / 2 openings

• <b>5054.68X</b>		LED	6,5W	Gx53	650 lm	4000 K
• <b>5054.69X</b>		LED	6,5W	Gx53	650 lm	3000 K



**5058**

• <b>5058.68X</b>		LED	6,5W	Gx53	650 lm	4000 K
• <b>5058.69X</b>		LED	6,5W	Gx53	650 lm	3000 K



• L'apparecchio viene fornito completo di lampadina  
Bulb enclosed with the luminaire