



GRETA

GRETA MINI

Apparecchio per illuminazione di esterni costituito da:

- Palo in alluminio estruso verniciato
- Struttura superiore in alluminio pressofuso verniciato
- Diffusore in policarbonato
- Guarnizione in silicone
- Viti di chiusura in acciaio inox
- Verniciatura in polveri poliestere ad elevata resistenza ai raggi ultravioletti e alla corrosione

Outdoor luminaire constructed of:

- Painted extruded aluminium post
- Painted die-cast aluminium head
- Polycarbonate diffuser
- Silicon gasket
- Stainless steel screws
- Painting using high resistance to UV and corrosion polyester powders



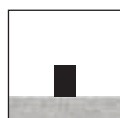
Colori - Colours

X=9  Antracite
Anthracite

X=4  Silver

Diffusore - Diffuser

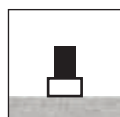
Codice-Code 08 3050



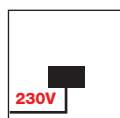
Installazione a terra
Floor mounting



Cod. 3056
Installazione a parete
Wall mounting



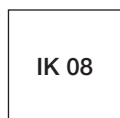
Cod. 3056
Installazione su muretto
Installation on a low fencing wall



LED

L'apparecchio è fornito completo di alimentatore elettronico 220/240V 50/60Hz posizionato all'interno dell'apparecchio.

The luminaire is supplied with a 220/240V 50/60Hz built-in power supply

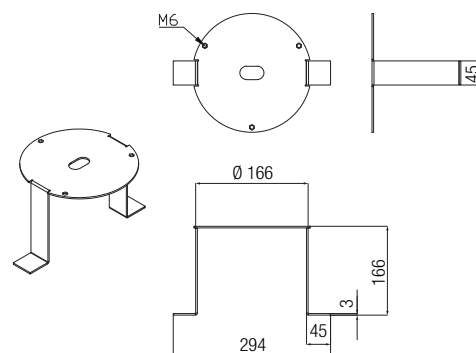


IK 08

OPTIONAL Cod. TR 3050

Flangia: accessorio per palo.

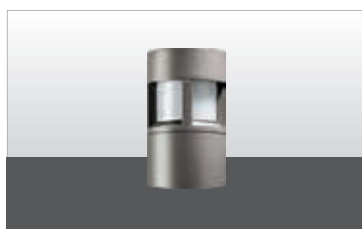
Flange: accessory for post.



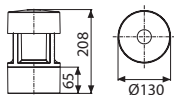
Diffusore in policarbonato
Polycarbonate diffuser

Installazione a muro o su muretto

Wall mounting or on a low fencing wall



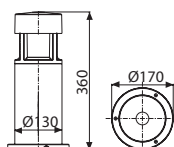
3056 H 208



3056.00X	LED	15W	E27	
3056.66X	LED	15W	2300 lm	4000 K
3056.67X	LED	15W	2300 lm	3000 K



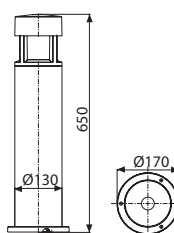
3052 H 360



3052.00X	LED	15W	E27	
3052.66X	LED	15W	2300 lm	4000 K
3052.67X	LED	15W	2300 lm	3000 K



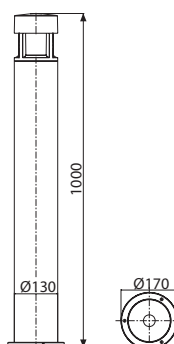
3051 H 650



3051.00X	LED	15W	E27	
3051.66X	LED	15W	2300 lm	4000 K
3051.67X	LED	15W	2300 lm	3000 K



3050 H 1000



3050.00X	LED	15W	E27	
3050.66X	LED	15W	2300 lm	4000 K
3050.67X	LED	15W	2300 lm	3000 K

GRETA BIG

Apparecchio per illuminazione di esterni a luce diretta o indiretta costituito da:

- Palo in alluminio estruso verniciato
- Struttura superiore in alluminio pressofuso verniciato
- Diffusore in vetro satinato o trasparente oppure in policarbonato
- Parabola riflettente in alluminio
- Guarnizione in silicone
- Viti di chiusura in acciaio inox
- Verniciatura in polveri poliestere ad elevata resistenza ai raggi ultravioletti e alla corrosione

Outdoor luminaire constructed of:

- Painted extruded aluminium post
- Painted die-cast aluminium head
- Satin or transparent glass diffuser or polycarbonate
- Aluminium reflector
- Silicon gasket
- Stainless steel screws
- Painting using high resistance to UV and corrosion polyester powders



Colori - Colours

X=9  Anthracite

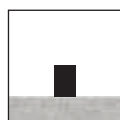
X=4  Silver

Diffusore - Diffuser

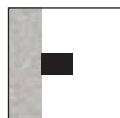
Codice-Code 08 8040
vetro satinato/satin glass

Codice-Code 00 8140
vetro trasparente/transparent glass

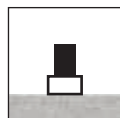
Codice-Code 00 8840
vetro trasparente/transparent glass



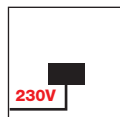
Installazione a terra
Floor mounting



Installazione a parete Cod. 8146 - 8046
Wall mounting



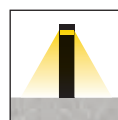
Installazione su muretto Cod. 8146 - 8046
Installation in a low fencing wall



LED
L'apparecchio è fornito completo di alimentatore elettronico 220/240V 50/60Hz posizionato all'interno dell'apparecchio.
The luminaire is supplied with a 220/240V 50/60Hz built-in power supply



IK 07



Cod. 8840 - 8841 - 8842

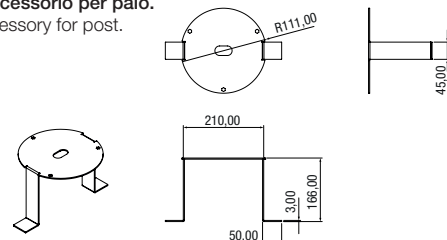
L'emissione di luce verso il basso è nel pieno rispetto delle leggi contro l'inquinamento luminoso.

The direct light emission is in full compliance with standard light pollution directives.

OPTIONAL

Cod. TR 8040

Flangia: accessorio per palo.
Flange: accessory for post.

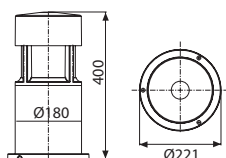


Apparecchio progettato nel rispetto delle leggi contro l'inquinamento luminoso
The luminaire is projected in full compliance with standard light pollution directives



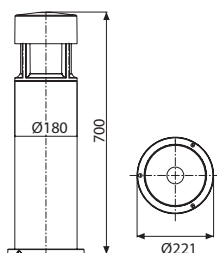
8842 H 400

8842.66X	LED	25W	2850 lm	4000 K
8842.67X	LED	25W	2630 lm	3000 K



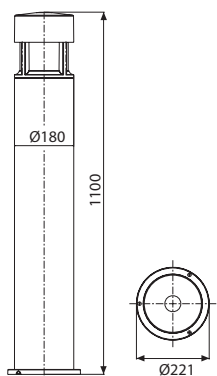
8841 H 700

8841.66X	LED	25W	2850 lm	4000 K
8841.67X	LED	25W	2630 lm	3000 K



8840 H 1100

8840.66X	LED	25W	2850 lm	4000 K
8840.67X	LED	25W	2630 lm	3000 K



GRETA BIG

GRETA BIG



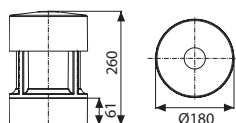
8146 H 260

Apparecchio a luce indiretta - Vetro trasparente
Indirect light luminaire - Transparent glass

Installazione a muro o su muretto

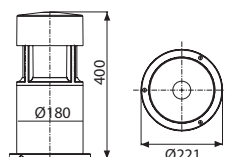
Wall mounting or on a low fencing wall

8146.00X	LED	15W	E27
8146.66X	LED	25W	2850 lm 4000 K
8146.67X	LED	25W	2630 lm 3000 K



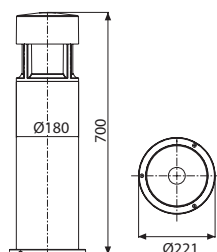
8142 H 400

8142.00X	LED	15W	E27
8142.66X	LED	25W	2850 lm 4000 K
8142.67X	LED	25W	2630 lm 3000 K



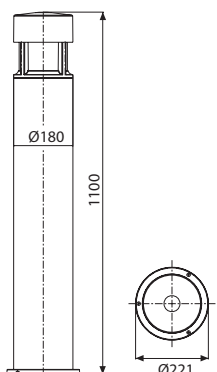
8141 H 700

8141.00X	LED	15W	E27
8141.66X	LED	25W	2850 lm 4000 K
8141.67X	LED	25W	2630 lm 3000 K



8140 H 1100

8140.00X	LED	15W	E27
8140.66X	LED	25W	2850 lm 4000 K
8140.67X	LED	25W	2630 lm 3000 K



Apparechio a luce diretta - Diffusore in policarbonato
Direct light luminaire - Polycarbonate diffuser

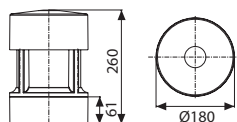
GRETA BIG

GRETA BIG



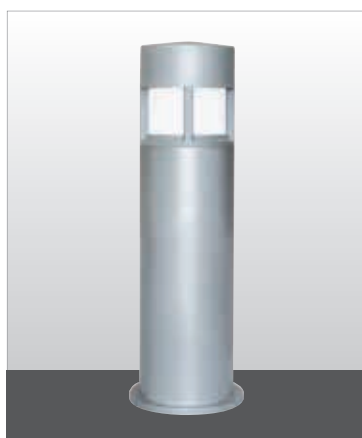
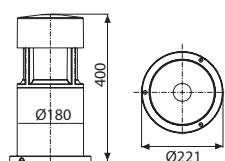
8046 H 260

8046.00X	LED	15W	E27
8046.66X	LED	12W	1700 lm 4000 K
8046.67X	LED	12W	1700 lm 3000 K



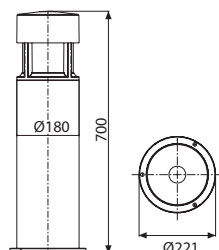
8042 H 400

8042.00X	LED	15W	E27
8042.66X	LED	25W	3700 lm 4000 K
8042.67X	LED	25W	3700 lm 3000 K



8041 H 700

8041.00X	LED	15W	E27
8041.66X	LED	25W	3700 lm 4000 K
8041.67X	LED	25W	3700 lm 3000 K



8040 H 1100

8040.00X	LED	15W	E27
8040.66X	LED	25W	3700 lm 4000 K
8040.67X	LED	25W	3700 lm 3000 K

